

Greenbone Security Manager

x-ray your network



The **Greenbone Security Manager (GSM)** is a dedicated Vulnerability Management security appliance. It integrates transparently into your vulnerability and threat management system.

With a choice of front-ends, security scans can give you full visibility of vulnerabilities in your network. The scan also identifies potential breaches of your corporate security policy and regulations.



Benefits

- Turn-key solution: operational within 10 minutes
- Powerful appliance operating system with special command line administration based on a comprehensive security design
- Integrates the Greenbone Security Feed with over 21,000 Network Vulnerability Tests, automatically updated daily with the newest threat detection routines
- Integrated Backup, Restore, Snapshot and Update
- Integrates Greenbone Security Assistant as central web interface
- No limitation on number of target IPs (effective number depends on scan pattern and scanned systems)
- Subscription is a flat-rate and includes exchange of defect hardware as well as access to the Greenbone Security Feed, feature updates and support

Specifications

Dimensions

- 427mm x 480mm x 44mm

Certifications

- CE
- FCC Class A

Environment

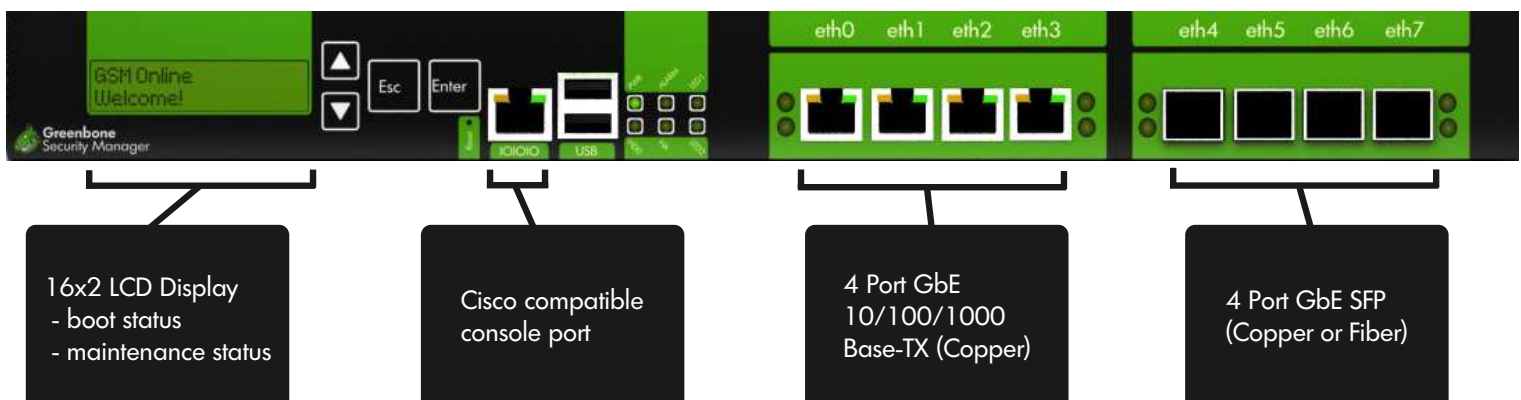
- Operating temperature: 0° to 40°C (32° to 104°F)
- Storage temperature: -20° to 80°C (-4° to 176°F)
- Humidity: 10% to 90% (non-condensing)

Connectivity

- 4 Port GbE 10/100/1000 Base-TX (Copper)
- 4 Port GbE SFP (Copper or Fiber)
- 1 Port Serial Console RS-232

Construction

- 1U rack mount chassis, heavy-duty steel
- 16x2 character LCD Display



Greenbone Security Manager

x-ray your network

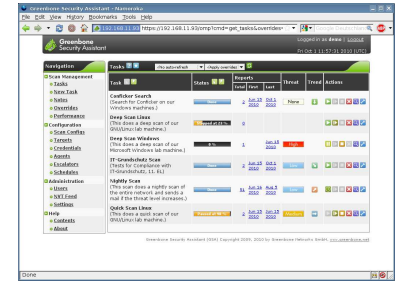


Features

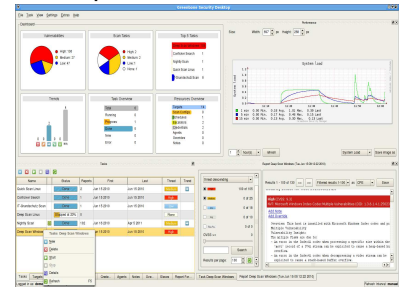
- Supported standards
 - o Network integration: SMTP (Email), SNMP, SysLog, LDAP, NTP, DHCP, IPv4/IPv6
 - o Vulnerability detection: CVE, CPE, CVSS, OVAL
 - o Network scans: WMI, LDAP, HTTP, SMB, SSH, TCP, UDP, ...
 - o Policies: IT-Grundschutz
- Application web-based interface (HTTPS)
 - o Scan tasks management with notes and false-positive marking
 - o Multi-user support
 - o Clustered and distributed scanning via master-slave mode
 - o Report browsing aided by filtering, sorting and annotations
 - o Plugin framework for reports: XML, PDF, ...
 - o Appliance performance overview
- Application remote control (SSL-secured OMP)
 - o OpenVAS Management Protocol (OMP)
 - o All user actions of web-based interface available
 - o Supported by desktop applications
 - o Automated via scriptable command line tools
- Administrative console interface (shell via SSHv2 or RS232)
 - o Network integration configuration
 - o Backup, Restore, Snapshot, Factory Reset, Update
- Includes approved and customized versions of
 - o Scan engine: OpenVAS Scanner, OpenVAS Manager, OpenVAS Administrator and Greenbone Security Assistant
 - o Additional scan tools: Nmap, w3af

Access to Manager

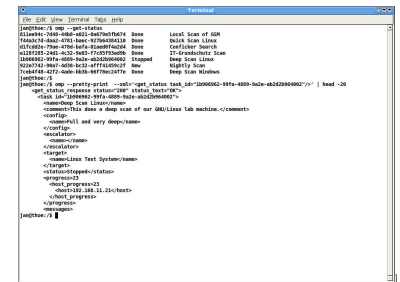
Web Interface



Desktop Interface



Command Line Interface



Neuer Graben 17
49074 Osnabrück
Germany

Phone: +49-541-335084-0
Fax: +49-541-335084-99
Email: info@greenbone.net
Web: www.greenbone.net

Notes / Your Greenbone Security Solutions Partner: