

GSM 35

Data Sheet



Greenbone
Sustainable Resilience

The **Greenbone Security Manager (GSM)** is a Vulnerability Management Solution that integrates seamlessly and transparently into your Security and GRC strategy, providing Vulnerability Assessment, Vulnerability Intelligence and Threat Management capabilities. Identifying breaches of corporate security policy and regulations is covered as well.

With a strong focus on 3rd party integration and open standards, the GSM is a best of breed security solution that enhances and supplements your security posture and allows a proactive approach to automated Vulnerability Life Cycle Management.

The **GSM 35** acts as a scan sensor for GSM models from GSM 400 and covers up to 300 IP addresses. The operational areas are small branch offices.



Specifications

Dimensions

430/480 mm (excl./incl.
rackmount) x 200 mm x 45 mm

Certification

- CE
- FCC

Environment

- Operating temperature:
0 °C to 45 °C (32 °F to 113 °F)
- Storage temperature:
- 20 °C to 80 °C (- 4 °F to 176 °F)
- Humidity: 10 % – 90 %
(non-condensing)

Connectivity

- 4 ports GbE
10/100/1000 Base-TX (copper)
- 1 port serial console RS-232
- 2 USB ports
- 1 HDMI connector

Construction

- Compact chassis, heavy-duty steel
- Rackmount kit
- Integrated power supply



Benefits

- Turnkey solution: simple and uncomplicated setup within shortest time
- Powerful appliance operating system Greenbone OS with command line administration based on a comprehensive security design
- Integrates the Greenbone Security Feed with over 85,000 Vulnerability Tests, automatically updated daily with the newest threat detection routines
- Integrated GOS upgrade
- No limitation on number of target IP addresses (effective number depends on scan pattern and scanned systems)
- Subscription for 1, 3 or 5 years includes the Platinum Support Package, the Greenbone Security Feed and feature updates

GSM 35

Data Sheet



Greenbone
Sustainable Resilience

Scan Capacity

- Up to 300 IP addresses in 24 h
- OpenVAS scanner for vulnerability tests and compliance audits
- CVE scanner for prognosis scans

Supported Standards

- Network integration: SSH, SMTP (e-mail), SysLog, NTP, DHCP, IPv4/IPv6
- Vulnerability detection: CVE, CPE, OVAL
- Severity classification via CVSS
- Network scans: WMI, LDAP, RADIUS, HTTP, SMB, SSH, TCP, UDP, etc.
- Policies: IT-Grundsutz, TLS-Map, BSI TR-03116 etc.

Management via Master's Graphical Web Interface (HTTPS)

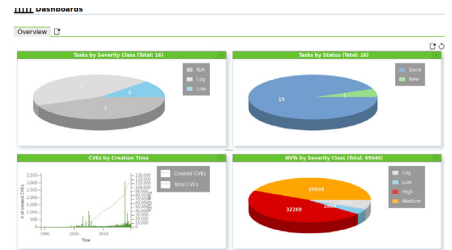
- Managing and starting scan tasks
- Report with filtering, sorting, notes, and risk scoring
- Automated scans through schedules
- Alerts, including on scan completion
- Multi-user support
- Clustering and distributed scanning via master-sensor mode
- Numerous report formats: XML, PDF, LaTeX, etc.
- Appliance performance overview

Integration/API

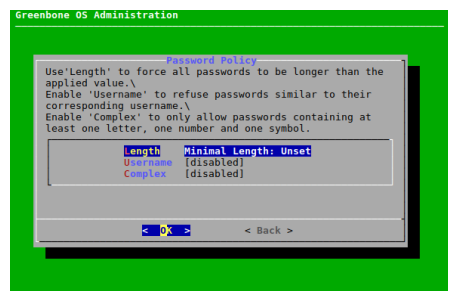
- Greenbone Management Protocol (GMP), encrypted
- All user actions of the web interface available via API
- Easy integration with other applications using the API
- Simple automation via command line tools (CLI)
- Integration with tools such as SIEM, IDS, NAC and others available

Operating System Features

- Network integration and configuration
- Backup, restore, snapshot, factory reset, upgrade



Information	Results	Hosts	Ports	Applications	Operating Systems	CVEs	Closed CVEs	TLS Certificates	Error Messages	User Tips
100 of 100	100 of 100	100 of 100	100 of 100	100 of 100	100 of 100	100 of 100	100 of 100	100 of 100	100 of 100	100 of 100
Severity	Count	Host	Name	Location	Created					
OpenSSL Framework Components End Of Life Detection	95 %	100.108.117.12	scan-target.greenbone.net	greenbone.net	Thu, 01 Jul 2021 2:09 PM					
OS End Of Life Detection	95 %	100.108.117.12	scan-target2.greenbone.net	greenbone.net	Thu, 01 Jul 2021 2:07 PM					
OS End Of Life Detection	95 %	100.108.117.12	scan-target.greenbone.net	greenbone.net	Thu, 01 Jul 2021 2:08 PM					
Anonymous FTP Login Reporting	95 %	100.108.117.12	110p.1088k.net	110p.1088k.net	Thu, 01 Jul 2021 2:12 PM					
ClearText Transmission of Sensitive Information via HTTP	95 %	100.108.117.12	scan-target4.greenbone.net	110p.1088k.net	Thu, 01 Jul 2021 2:08 PM					
SSL Weak Encryption Algorithms Support	95 %	100.108.117.12	110p.1088k.net	110p.1088k.net	Thu, 01 Jul 2021 2:08 PM					
SSL Weak Encryption Algorithms Support	95 %	100.108.117.12	scan-target2.greenbone.net	110p.1088k.net	Thu, 01 Jul 2021 2:12 PM					
SSL Weak Encryption Algorithms Support	95 %	100.108.117.12	110p.1088k.net	110p.1088k.net	Thu, 01 Jul 2021 2:08 PM					



Your Greenbone Partner:

Greenbone Networks GmbH
Neumarkt 12
49074 Osnabrück
Germany

Office: +49-541-760278-0
Fax: +49-541-760278-90
E-mail: sales@greenbone.net
Web: www.greenbone.net