

# GSM 400

## Data Sheet

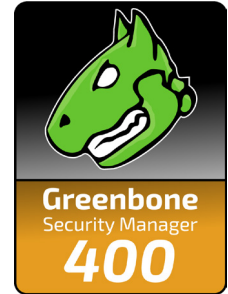


**Greenbone**  
Sustainable Resilience

The **Greenbone Security Manager (GSM)** is a Vulnerability Management solution that integrates seamlessly and transparently into your Security and GRC strategy, providing Vulnerability Assessment, Vulnerability Intelligence and Threat Management capabilities. Identifying breaches of corporate security policy and regulations is covered as well.

With a strong focus on 3rd party integration and open standards, the GSM is a best of breed security solution that enhances and supplements security posture and allows a proactive approach to automated Vulnerability Life Cycle Management.

The **GSM 400** controls sensors for up to 2 security zones and covers up to 2,000 IP addresses. The operational area is large enterprise IT.



## Benefits

- Turnkey solution: simple and uncomplicated setup within shortest time
- Powerful appliance operating system Greenbone OS with command line administration based on a comprehensive security design
- Integrates the Greenbone Security Feed with over 85,000 Vulnerability Tests that are automatically updated with the newest threat detections routines daily
- Integrated backup, restore, snapshot and GOS upgrade
- Integrated Greenbone Security Assistant as central web interface
- No limitation on number of target IP addresses (effective number depends on scan pattern and scanned systems)
- Subscription for 1, 3 or 5 years includes the Platinum Support Package, the Greenbone Security Feed and feature updates

## Specifications

### Dimensions

430 mm x 450 mm x 45 mm

### Certification

- CE
- FCC Class A

### Environment

- Operating temperature:  
0 °C to 45 °C (32 °F to 113 °F)
- Storage temperature:  
- 20 °C to 80 °C (- 4 °F to 176 °F)
- Humidity: 10 % – 90 %  
(non-condensing)

### Connectivity

- 6 ports GbE  
10/100/1000 Base-TX (copper)
- 2 ports GbE SFP  
(copper or fiber)
- 1 port serial console RS-232

### Construction

- 1U rack mount chassis,  
heavy-duty steel
- 16x2 character LCD

# GSM 400

## Data Sheet



**Greenbone**  
Sustainable Resilience

### Scan Capacity

- Up to 2,000 IP addresses in 24 h
- Control of up to 2 sensors
- OpenVAS scanner for vulnerability tests and compliance audits
- CVE scanner for prognosis scans

### Supported Standards

- Network integration: SSH, SMTP (e-mail), SNMP, SysLog, LDAP, RADIUS, NTP, DHCP, IPv4/IPv6
- Vulnerability detection: CVE, CPE, OVAL
- Severity classification via CVSS
- Network scans: WMI, LDAP, RADIUS, HTTP, SMB, SSH, TCP, UDP, etc.
- Policies: IT-Grundschutz, TLS-Map, BSI TR-03116 etc.

### Graphical Web Interface (HTTPS)

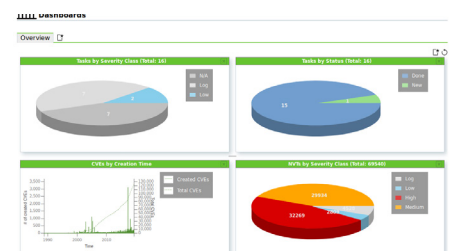
- Managing and starting scan tasks
- Report with filtering, sorting, notes, and risk scoring
- Automated scans through schedules
- Alerts, including on scan completion
- Multi-user support
- Clustering and distributed scanning via master-sensor mode
- Numerous report formats: XML, PDF, LaTeX, etc.
- Appliance performance overview

### Integration/API

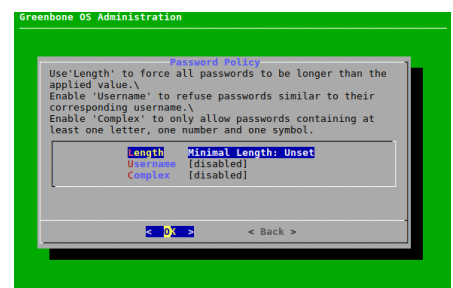
- Greenbone Management Protocol (GMP), encrypted
- All user actions of the web interface available via API
- Easy integration with other applications using the API
- Simple automation via command line tools (CLI)
- Integration with tools such as SIEM, IDS, NAC and others available

### Operating System Features

- Network integration and configuration
- Airgap function
- Backup, restore, snapshot, factory reset, upgrade



| Information   | Results | Hosts | Ports | Applications | Operating Systems | CVEs | Closed CVEs | TLS Certificates | Error Messages | User Tips |
|---|---------|-------|-------|--------------|-------------------|------|-------------|------------------|----------------|-----------|
| Vulnerability   |         |       |       |              |                   |      |             |                  |                |           |
| OpenSSL Password Components End Of Life Detection       | 95%     | 100   | 100   | 100          | 100               | 100  | 100         | 100              | 100            | 100       |
| OS End Of Life Detection                                | 95%     | 100   | 100   | 100          | 100               | 100  | 100         | 100              | 100            | 100       |
| OS End Of Life Detection                                | 95%     | 100   | 100   | 100          | 100               | 100  | 100         | 100              | 100            | 100       |
| Anonymous FTP Login Reporting                           | 95%     | 100   | 100   | 100          | 100               | 100  | 100         | 100              | 100            | 100       |
| Outdated Transmission of Sensitive Information via HTTP | 95%     | 100   | 100   | 100          | 100               | 100  | 100         | 100              | 100            | 100       |
| SSH Weak Encryption Algorithms Support                  | 95%     | 100   | 100   | 100          | 100               | 100  | 100         | 100              | 100            | 100       |
| SSH Weak Encryption Algorithms Support                  | 95%     | 100   | 100   | 100          | 100               | 100  | 100         | 100              | 100            | 100       |
| SSH Weak MAC Algorithms Support                         | 95%     | 100   | 100   | 100          | 100               | 100  | 100         | 100              | 100            | 100       |



Your Greenbone Partner:

**Greenbone Networks GmbH**  
Neumarkt 12  
49074 Osnabrück  
Germany

Office: +49-541-760278-0  
Fax: +49-541-760278-90  
E-mail: sales@greenbone.net  
Web: www.greenbone.net