

GSM 5400

Data Sheet



Greenbone
Sustainable Resilience

The **Greenbone Security Manager (GSM)** is a Vulnerability Management Solution that integrates seamlessly and transparently into your Security and GRC strategy, providing Vulnerability Assessment, Vulnerability Intelligence and Threat Management capabilities. Identifying breaches of corporate security policy and regulations is covered as well.

With a strong focus on 3rd party integration and open standards, the GSM is a best of breed security solution that enhances and supplements security posture and allows a proactive approach to automated Vulnerability Life Cycle Management.

The **GSM 5400** controls sensors for up to 40 security zones and covers up to 40,000 IP addresses. The operational area is large enterprise IT.



Benefits

- Turn-key solution: operational within 10 minutes
- Powerful appliance operating system Greenbone OS with command line administration based on a comprehensive security design
- Integrates the Greenbone Security Feed with over 68,000 Vulnerability Tests that are automatically updated with the newest threat detections routines daily
- Integrated backup, restore, snapshot and GOS-upgrade
- Integrated Greenbone Security Assistant as central web interface
- No limitation on number of target IP addresses (effective number depends on scan pattern and scanned systems)
- Flat rate subscription includes the Platinum Support package, the Greenbone Security Feed and feature updates

Specifications

Dimensions

440 mm x 550 mm x 88 mm

Certification

- CE
- FCC Class A
- UL

Environment

- Operating temperature:
0 C° to 45 °C (32 F° to 113 °F)
- Storage temperature:
-20 C° to 80 °C (-4 F° to 176 °F)
- Humidity: 10% - 90%
(non-condensing)

Connectivity

- Up to 4 modules, each with optional:
 - 8 ports GbE
10/100/1000 Base-TX
(copper)
 - 8 ports GbE SFP
(copper or fiber)
 - 2 ports 10 GbE XFP
- 1 port for serial console RS-232

Construction

- 2U rack mount chassis,
heavy-duty steel
- Redundant and hot swap:
HDD, power, fans

GSM 5400

Data Sheet



Greenbone
Sustainable Resilience

Supported standards

- Network integration: SMTP (e-mail), SNMP, SysLog, LDAP, NTP, DHCP, IPv4/IPv6
- Vulnerability detection: CVE, CPE, CVSS, OVAL
- Network scans: WMI, LDAP, HTTP, SMB, SSH, TCP, UDP, etc.
- Policies: IT-Baseline security, PCI-DSS, ISO 27001

Web-Based Interface (HTTPS)

- Scan tasks management with notes and false-positive marking
- Multi-user support
- Clustered and distributed scanning via master-sensor mode
- Report browsing aided by filtering, sorting, annotating and risk scoring
- Plugin framework for reports: XML, PDF, etc.
- Appliance performance overview

Integration/API

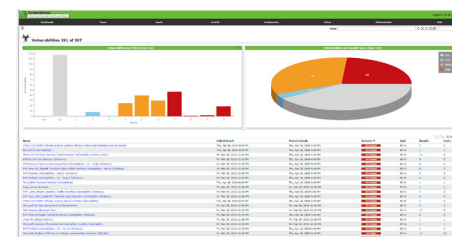
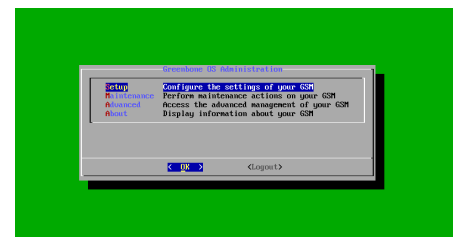
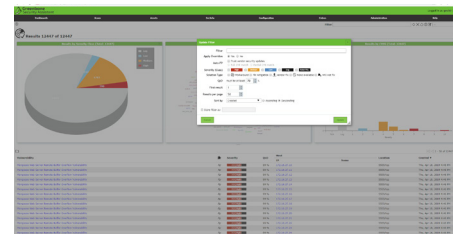
- Greenbone Management Protocol (GMP), secured
- All user actions of the web-based interface available via API
- Easy integration with other applications using the API
- Simple automation via command line tools (CLI)
- Integration to tools such as SIEM, IDS, NAC and others available

Administrative console interface

- Network integration configuration
- Backup, restore, snapshot, factory reset, upgrade

Scan-Application

- Scan engine and framework: Greenbone Vulnerability Manager (GVM) with integrated Greenbone Security Feed
- Additional scan tools



Your Greenbone Security Solutions Partner:

Greenbone Networks GmbH
Neumarkt 12
49074 Osnabrück
Germany

Office: +49-541-760278-0
Fax: +49-541-760278-90
Email: sales@greenbone.net
Web: www.greenbone.net