

# GSM CENO

## Data Sheet

---

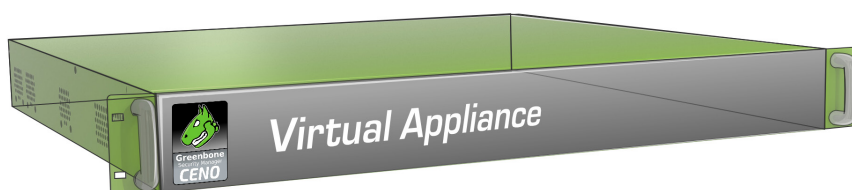


**Greenbone**  
Sustainable Resilience

The **Greenbone Security Manager (GSM)** is a Vulnerability Management solution that integrates seamlessly and transparently into your security and GRC strategy, providing vulnerability assessment, vulnerability intelligence and threat management capabilities. Identifying breaches of corporate security policy and regulations is covered as well.

With a strong focus on 3rd party integration and open standards, the GSM is a best of breed security solution that enhances and supplements your security posture and allows a proactive approach to automated Vulnerability Life Cycle Management.

The **GSM CENO** covers up to 500 IP addresses. The operational areas are small to medium enterprise IT or medium offices.



## Benefits

- Turnkey solution: simple and uncomplicated setup within shortest time
- Powerful appliance operating system Greenbone OS with command line administration bases on a comprehensive security design
- Integrates the Greenbone Security Feed with over 85,000 Vulnerability Tests, automatically updated daily with the newest threat detection routines
- Integrated GOS upgrade
- Integrated Greenbone Security Assistant as central web interface
- No limitation on number of target IP addresses (effective number depends on scan pattern and scanned systems)
- Subscription for 1, 3 or 5 years includes the Platinum Support Package, the Greenbone Security Feed and feature updates

## Specifications

### Hypervisor

The following hypervisor is supported:

- VMware ESXi

### System Requirements

- 64 bit Linux OS
- 2 vCPUs
- 8 GB RAM
- 32 GB HDD storage

### Connectivity

- 4 virtual Ethernet ports

# GSM CENO

## Data Sheet



**Greenbone**  
Sustainable Resilience

### Scan Capacity

- Up to 500 IP addresses in 24 h
- OpenVAS scanner for vulnerability tests and compliance audits
- CVE scanner for prognosis scans

### Supported Standards

- Network integration: SSH, SMTP (e-mail), SysLog, LDAP, RADIUS, DHCP, IPv4/IPv6
- Vulnerability detection: CVE, CPE, OVAL
- Severity classification via CVSS
- Network scans: WMI, LDAP, RADIUS, HTTP, SMB, SSH, TCP, UDP, etc.
- Policies: IT-Grundschutz, TLS-Map, BSI TR-03116 etc.

### Graphical Web Interface (HTTPS)

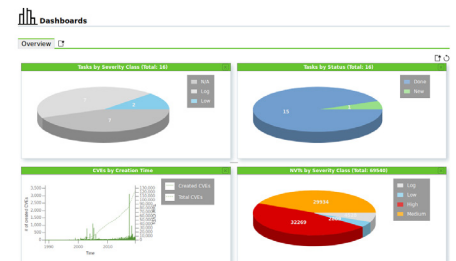
- Managing and starting scan tasks
- Report with filtering, sorting, notes, and risk scoring
- Automated scans through schedules
- Alerts, including on scan completion
- Multi-user support
- Clustering and distributed scanning via master-sensor mode
- Numerous report formats: XML, PDF, LaTeX, etc.
- Appliance performance overview

### Integration/API

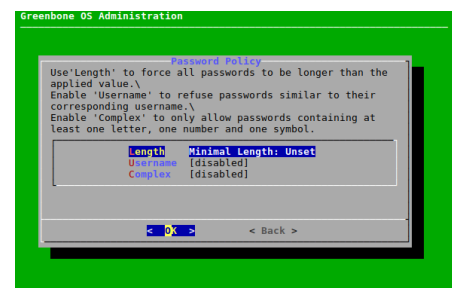
- Greenbone Management Protocol (GMP), encrypted
- All user actions of the web interface available via API
- Easy integration with other applications using the API
- Simple automation via command line tools (CLI)
- Integration with tools such as SIEM, IDS, NAC and others available

### Operating System Features

- Network integration and configuration
- Airgap function
- Backup, restore, snapshot, factory reset, upgrade



Information	Results	Hosts	Ports	Applications	Operating Systems	CVEs	Closed CVEs	TLS Certificates	Error Messages	User Tags
Vulnerability	Severity	QoS	#	Name	Location	Created				
OpenSSL Framework Components End Of Life Detection	C	CRITICAL	85 %	100.208.101.12	scan-target-0.greenbone.net	generos@ip				Thu, 02 Jun 2021 12:38 PM UTC
OS End Of Life Detection	C	CRITICAL	85 %	100.208.101.8	scan-target-0.greenbone.net	generos@ip				Thu, 02 Jun 2021 12:38 PM UTC
OS End Of Life Detection	C	CRITICAL	85 %	100.208.101.12	scan-target-0.greenbone.net	generos@ip				Thu, 02 Jun 2021 12:38 PM UTC
Anonymous FTP Login Reporting	C	CRITICAL	85 %	100.208.101.12	100.208.101.12	100.208.101.12				Thu, 02 Jun 2021 12:38 PM UTC
OpenSSL Framework Components End Of Life Detection	C	CRITICAL	85 %	100.208.101.12	scan-target-0.greenbone.net	100.208.101.12				Thu, 02 Jun 2021 12:38 PM UTC
OpenSSL Framework Components End Of Life Detection	C	CRITICAL	85 %	100.208.101.8	scan-target-0.greenbone.net	100.208.101.8				Thu, 02 Jun 2021 12:38 PM UTC
OpenSSL Framework Components End Of Life Detection	C	CRITICAL	85 %	100.208.101.12	scan-target-0.greenbone.net	100.208.101.12				Thu, 02 Jun 2021 12:38 PM UTC
OpenSSL Framework Components End Of Life Detection	C	CRITICAL	85 %	100.208.101.8	scan-target-0.greenbone.net	100.208.101.8				Thu, 02 Jun 2021 12:38 PM UTC



Your Greenbone Partner:

**Greenbone Networks GmbH**  
Neumarkt 12  
49074 Osnabrück  
Germany

Office: +49-541-760278-0  
Fax: +49-541-760278-90  
E-mail: sales@greenbone.net  
Web: www.greenbone.net