

GSM ONE

Data Sheet

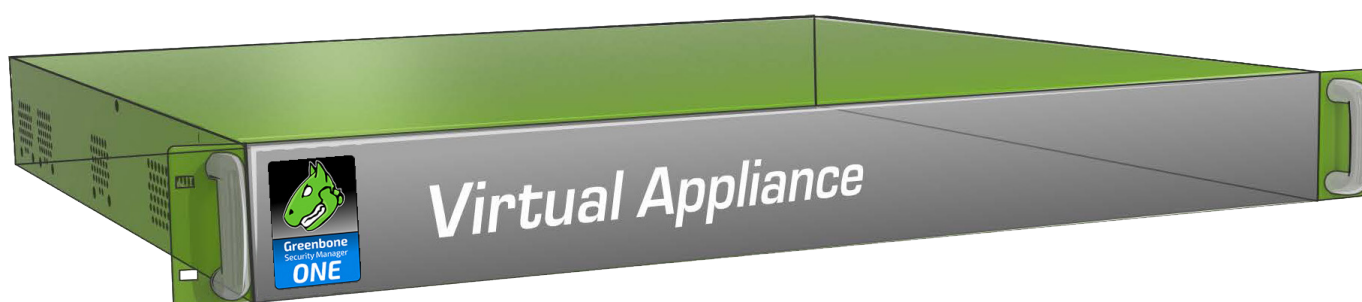


Greenbone
Sustainable Resilience

The **Greenbone Security Manager (GSM)** is a Vulnerability Management Solution that integrates seamlessly and transparently into your security and GRC strategy, providing vulnerability assessment, vulnerability intelligence and threat management capabilities. Identifying breaches of corporate security policy and regulations is covered as well.

With a strong focus on 3rd party integration and open standards, the GSM is a best of breed security solution that enhances and supplements your security posture and allows a proactive approach to automated vulnerability life cycle management.

The **GSM ONE** covers up to 300 IP addresses in a 24 h time frame. The operational areas are small and micro-sized enterprises aiming to scan their IT for vulnerabilities.



Benefits

- Turn-key solution: operational within 10 minutes
- Powerful appliance operating system Greenbone OS with command line administration based on a comprehensive security design
- Integrated Greenbone Security Feed with over 70,500 Network Vulnerability Tests, automatically updated daily with the newest vulnerability detection routines
- Integrated Update
- Integrated Greenbone Security Assistant as central web interface
- No limitation on number of target IP addresses (effective number in 24 h depends on scan pattern and scanned systems)
- Flat rate subscription includes the Platinum Support package, the Greenbone Security Feed and feature updates

Specifications

Virtual Appliance Format

OVA can be imported into the following virtualization environments:

- VMware ESXi
- Microsoft Hyper-V
- Oracle VirtualBox

Appliance Details

- 64 bit Linux OS
- 2 CPUs
- 4 GB RAM
- 16 GB HDD Storage

Connectivity

- 1 virt. Ethernet Port

Solution Elements

System includes

- Virtual Appliance
- 1, 3 or 5 years access to the Greenbone Platinum Support

GSM ONE

Data Sheet



Greenbone
Sustainable Resilience

Supported standards

- Network integration: DHCP, IPv4/IPv6
- Vulnerability detection: CVE, CPE, CVSS
- Network scans: WMI, HTTP, SMB, SSH, TCP, UDP, etc.
- Policies: IT-Grundschutz, PCI-DSS, ISO 27001

Web-Based Interface (HTTPS)

- Scan tasks management with notes and false-positives marking
- Multi-user support
- Report browsing aided by filtering, sorting, annotating and risk scoring
- Plug-in framework for reports: XML, PDF, etc.
- Appliance performance overview

Integration/API

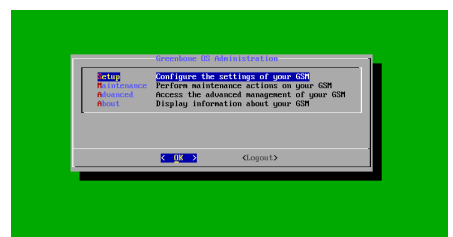
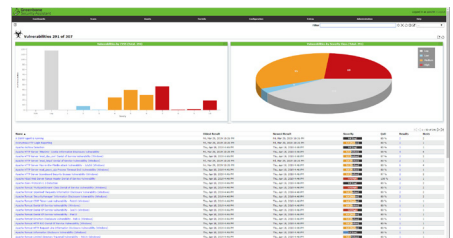
- Greenbone Management Protocol (GMP), secured
- All user actions of web-based interface available via API
- Easy integration with other applications
- Simple automation via command line tools

Administrative Console Interface

- Network integration and configuration
- Update

Scan-Application

- Scan engine and framework: Greenbone Vulnerability Manager (GVM) with integrated Greenbone Security Feed (GSF)
- License key tied to appliance



Your Greenbone Security Solutions Partner:

Greenbone Networks GmbH
Neumarkt 12
49074 Osnabrück
Germany

Office: +49-541-760278-0
Fax: +49-541-760278-90
Email: sales@greenbone.net
Web: www.greenbone.net