

GSM ONE

Data Sheet

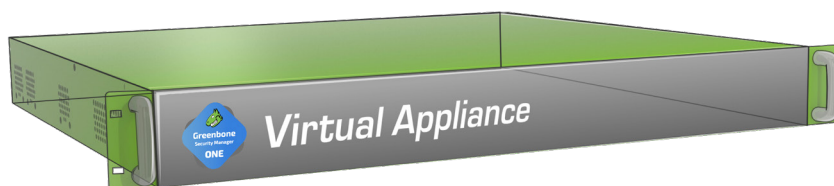


Greenbone
Sustainable Resilience

The **Greenbone Security Manager (GSM)** is a Vulnerability Management Solution that integrates seamlessly and transparently into your security and GRC strategy, providing vulnerability assessment, vulnerability intelligence and threat management capabilities. Identifying breaches of corporate security policy and regulations is covered as well.

With a strong focus on 3rd party integration and open standards, the GSM is a best of breed security solution that enhances and supplements your security posture and allows a proactive approach to automated vulnerability life cycle management.

The **GSM ONE** covers up to 300 IP addresses. The operational areas are small and micro-sized enterprises aiming to scan their IT for vulnerabilities.



Benefits

- Turnkey solution: simple and uncomplicated setup within shortest time
- Powerful appliance operating system Greenbone OS with command line administration based on a comprehensive security design
- Integrated Greenbone Security Feed with more than 100,000 vulnerability tests with daily, automated updates
- Integrated Greenbone Security Assistant as central web interface
- No limitation on number of target IP addresses (effective number in 24 h depends on scan pattern and scanned systems)
- Subscription for 1, 3 or 5 years includes the Support Package, the Greenbone Security Feed and feature updates

Specifications

Hypervisor

The following hypervisors are supported:

- Oracle VirtualBox
- VMware Workstation Pro
- VMware Workstation Player

System Requirements

- 64 bit Linux OS
- 2 CPUs
- 6 GB RAM
- 16 GB HDD storage

Connectivity

- 1 virtual Ethernet port



Scan Capacity

- Up to 300 IP addresses in 24 h
- OpenVAS scanner for vulnerability tests and compliance audits
- CVE scanner for prognosis scans

Supported Standards

- Network integration: SSH, SMTP (e-mail), DHCP, IPv4/IPv6
- Vulnerability detection: CVE, CPE, OVAL
- Severity classification via CVSS
- Network scans: WMI, LDAP, RADIUS, HTTP, SMB, SSH, TCP, UDP, etc.
- Policies: IT-Grundschutz, TLS-Map, BSI TR-03116 etc.

Graphical Web Interface (HTTPS)

- Managing and starting scan tasks
- Report with filtering, sorting, notes, and risk scoring
- Automated scans through schedules
- Alerts, including on scan completion
- Multi-user support
- Clustering and distributed scanning via master-sensor mode
- Numerous report formats: XML, PDF, LaTeX, etc.
- Appliance performance overview

Integration/API

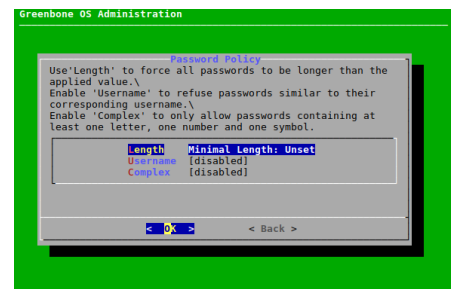
- Greenbone Management Protocol (GMP), encrypted
- All user actions of the web interface available via API
- Easy integration with other applications using the API
- Simple automation via command line tools (CLI)
- Integration with tools such as SIEM, IDS, NAC and others available

Operating System Features

- Network integration and configuration
- Backup, restore, snapshot, factory reset, upgrade



Vulnerability	Severity	CPE	CVE	Name	Location	Created
OpenSSL Framework Component End Of Life Detection	Critical	CPE:2.3:openssl:openssl:1.0.2g	CVE-2020-15146	scan-target-3.greenbone.net	generaltip	Thu, 03 Jun 2020 12:57 PM UTC
OS End Of Life Detection	Critical	CPE:2.3:linux:linux:3.10-1022.el7.x86_64	CVE-2020-15146	scan-target-3.greenbone.net	generaltip	Thu, 03 Jun 2020 12:57 PM UTC
OS End Of Life Detection	Critical	CPE:2.3:linux:linux:3.10-1022.el7.x86_64	CVE-2020-15146	scan-target-3.greenbone.net	generaltip	Thu, 03 Jun 2020 12:57 PM UTC
Anonymous FTP Login Reporting	Critical	CPE:2.3:linux:linux:3.10-1022.el7.x86_64	CVE-2020-15146	193p-osmka-001	generaltip	Thu, 03 Jun 2020 12:57 PM UTC
Cluster Configuration of Certificate Information via HTTP	Critical	CPE:2.3:linux:linux:3.10-1022.el7.x86_64	CVE-2020-15146	scan-target-4.greenbone.net	generaltip	Thu, 03 Jun 2020 12:57 PM UTC
User Name Encryption Algorithms Supported	Critical	CPE:2.3:linux:linux:3.10-1022.el7.x86_64	CVE-2020-15146	193p-osmka-001	generaltip	Thu, 03 Jun 2020 12:57 PM UTC
User Name Encryption Algorithms Supported	Critical	CPE:2.3:linux:linux:3.10-1022.el7.x86_64	CVE-2020-15146	193p-osmka-001	generaltip	Thu, 03 Jun 2020 12:57 PM UTC
User Name PAM Algorithms Supported	Critical	CPE:2.3:linux:linux:3.10-1022.el7.x86_64	CVE-2020-15146	193p-osmka-001	generaltip	Thu, 03 Jun 2020 12:57 PM UTC



Your Greenbone Partner:

Greenbone Networks GmbH
Neumarkt 12
49074 Osnabrück
Germany

Office: +49-541-760278-0
Fax: +49-541-760278-90
E-mail: sales@greenbone.net
Web: www.greenbone.net