

# GSM ONE

## Data Sheet

---

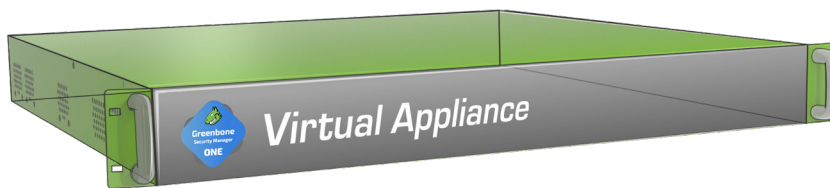


**Greenbone**  
Sustainable Resilience

The **Greenbone Security Manager (GSM)** is a Vulnerability Management Solution that integrates seamlessly and transparently into your security and GRC strategy, providing vulnerability assessment, vulnerability intelligence and threat management capabilities. Identifying breaches of corporate security policy and regulations is covered as well.

With a strong focus on 3rd party integration and open standards, the GSM is a best of breed security solution that enhances and supplements your security posture and allows a proactive approach to automated vulnerability life cycle management.

The **GSM ONE** covers up to 200 IP addresses. The operational areas are small and micro-sized enterprises aiming to scan their IT for vulnerabilities.



## Benefits

- Turnkey solution: simple and uncomplicated setup within shortest time
- Powerful appliance operating system Greenbone OS with command line administration based on a comprehensive security design
- Integrated Greenbone Security Feed with more than 100,000 vulnerability tests with daily, automated updates
- Integrated Greenbone Security Assistant as central web interface
- No limitation on number of target IP addresses (effective number in 24 h depends on scan pattern and scanned systems)
- Subscription for 1, 3 or 5 years includes the Support Package, the Greenbone Security Feed and feature updates

## Specifications

### Hypervisor

The following hypervisors are supported:

- Oracle VirtualBox
- VMware Workstation Pro
- VMware Workstation Player

### System Requirements

- 64 bit Linux OS
- 2 CPUs
- 6 GB RAM
- 16 GB HDD storage

### Connectivity

- 1 virtual Ethernet port

# GSM ONE

## Data Sheet



**Greenbone**  
Sustainable Resilience

### Scan Capacity

- Up to 200 IP addresses in 24 h
- OpenVAS scanner for vulnerability tests and compliance audits
- CVE scanner for prognosis scans

### Supported Standards

- Network integration: SSH, SMTP (e-mail), DHCP, IPv4/IPv6
- Vulnerability detection: CVE, CPE, OVAL
- Severity classification via CVSS
- Network scans: WMI, LDAP, RADIUS, HTTP, SMB, SSH, TCP, UDP, etc.
- Policies: IT-Grundschutz, TLS-Map, BSI TR-03116 etc.

### Graphical Web Interface (HTTPS)

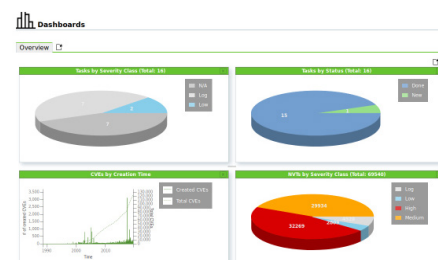
- Managing and starting scan tasks
- Report with filtering, sorting, notes, and risk scoring
- Automated scans through schedules
- Alerts, including on scan completion
- Multi-user support
- Clustering and distributed scanning via master-sensor mode
- Numerous report formats: XML, PDF, LaTeX, etc.
- Appliance performance overview

### Integration/API

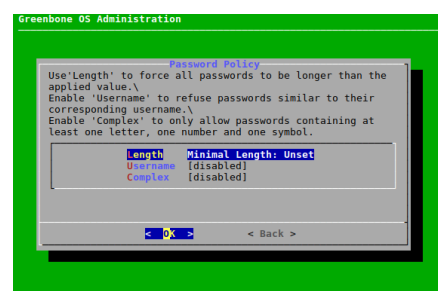
- Greenbone Management Protocol (GMP), encrypted
- All user actions of the web interface available via API
- Easy integration with other applications using the API
- Simple automation via command line tools (CLI)
- Integration with tools such as SIEM, IDS, NAC and others available

### Operating System Features

- Network integration and configuration
- Backup, restore, snapshot, factory reset, upgrade



Information	Results	Hosts	Parts	Applications	Operating Systems	CVEs	Cloud CVEs	TLS Certificates	Error Messages	User Tags
Vulnerability	100	100	100	100	100	100	100	100	100	100
OpenVAS Framework Components End Of Life Detection	100	100	100	100	100	100	100	100	100	100
OS End Of Life Detection	100	100	100	100	100	100	100	100	100	100
OS End Of Life Detection	100	100	100	100	100	100	100	100	100	100
Automated FTP Login Reporting	100	100	100	100	100	100	100	100	100	100
Cluster Transmission of Sensitive Information via HTTP	100	100	100	100	100	100	100	100	100	100
User Name Encryption Algorithms Supported	100	100	100	100	100	100	100	100	100	100
User Name Encryption Algorithms Supported	100	100	100	100	100	100	100	100	100	100
User Name PAM Algorithms Supported	100	100	100	100	100	100	100	100	100	100



Your Greenbone Partner:

**Greenbone Networks GmbH**  
Neumarkt 12  
49074 Osnabrück  
Germany

Office: +49-541-760278-0  
Fax: +49-541-760278-90  
E-mail: sales@greenbone.net  
Web: www.greenbone.net