

Greenbone Enterprise 25V

Data Sheet



Greenbone

The **Greenbone Enterprise Appliance** is a vulnerability management solution that integrates seamlessly and transparently into your security strategy, providing vulnerability assessment and threat management capabilities.

It also detects violations of corporate security policies and regulations. With a strong focus on third-party integration and open standards, the Greenbone Enterprise Appliance is a best-in-class security solution that enhances and complements your security posture. Furthermore, it enables automated vulnerability management.

The **Greenbone Enterprise 25V** acts as a virtual scan sensor for appliance models from GSM 400/DECA and higher and covers up to 100 IP addresses. The operational areas are small branch offices.



Benefits

- Turnkey solution: simple and uncomplicated setup within shortest time
- Powerful appliance operating system Greenbone OS with specially adapted, console-based administration
- Integrated Greenbone Enterprise Feed with more than 150,000 vulnerability tests with daily, automated updates
- No limitation on number of target IP addresses (effective number depends on scan pattern and scanned systems)
- Subscription includes the Greenbone Enterprise Support and the Greenbone Enterprise Feed including updates for the vulnerability tests as well as upgrades for the GOS operating system

Specifications

Hypervisor

The following hypervisors are supported:

- Microsoft Hyper-V
- VMware vSphere Hypervisor (ESXi)
- Huawei FusionCompute

System Requirements

- 64 bit Linux OS
- 2 vCPUs
- 6 GB RAM
- 70 GB HDD storage

Connectivity

- 4 virtual Ethernet ports

Greenbone Enterprise 25V

Data Sheet



Greenbone

Scan Capacity

- Up to 100 IP addresses in 24 h
- OpenVAS scanner for vulnerability tests and compliance audits
- CVE scanner for prognosis scans

Supported Standards

- Network integration: SSH, SMTP (e-mail), DHCP, IPv4/IPv6
- Vulnerability classification: CVE and CPE
- Severity classification via CVSS
- Network scans: WMI, LDAP, RADIUS, HTTP, SMB, SSH, TCP, UDP, etc.
- Compliance policies: CIS Benchmarks, IT-Grundschutz, BSI TR-03116 etc.

Management via Web-Based Interface of the Master

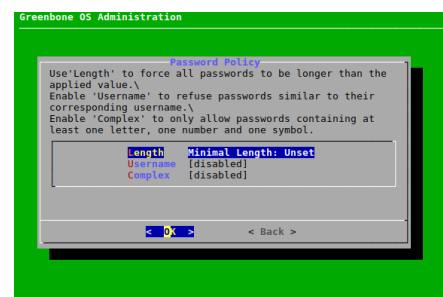
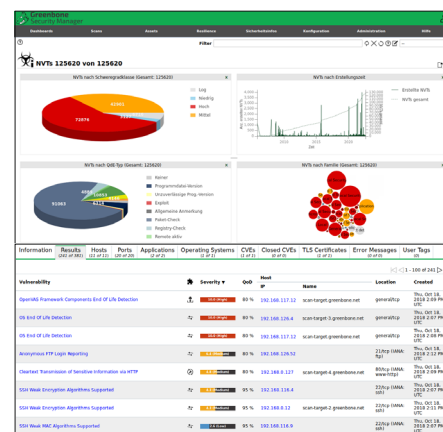
- Managing and starting scan tasks
- Report with filtering, sorting, notes, and risk scoring
- Automated scans through schedules
- Alerts, including on scan completion
- Multi-user support
- Clustering and distributed scanning via master-sensor mode
- Reports as PDF, HTML, text and XML
- Appliance performance overview

Integration/API

- Greenbone Management Protocol (GMP), encrypted
- All user actions of the web interface available via API
- Easy integration with other applications using the API
- Simple automation via command line tools (CLI)

Operating System Features

- Network integration and configuration
- Upgrade



Greenbone AG
Neumarkt 12
49074 Osnabrück
Germany

Tel.: +49-541-760278-0
E-Mail: sales@greenbone.net
www.greenbone.net