

Greenbone Enterprise 400

Data Sheet



Greenbone

The **Greenbone Enterprise Appliance** is a vulnerability management solution that integrates seamlessly and transparently into your security strategy, providing vulnerability assessment and threat management capabilities.

It also detects violations of corporate security policies and regulations. With a strong focus on third-party integration and open standards, the Greenbone Enterprise Appliance is a best-in-class security solution that enhances and complements your security posture. Furthermore, it enables automated vulnerability management.

The **Greenbone Enterprise 400** controls sensors for up to 2 security zones and covers up to 300 IP addresses. The operational areas are mid-sized enterprise IT or larger branch offices.



Benefits

- Turnkey solution: simple and uncomplicated setup within shortest time
- Powerful appliance operating system Greenbone OS with specially adapted, console-based administration
- Integrated Greenbone Enterprise Feed with more than 150,000 vulnerability tests with daily, automated updates
- Integrated backup, restore and GOS upgrade
- Integrated web interface for scan management
- No limitation on number of target IP addresses (effective number depends on scan pattern and scanned systems)
- Subscription includes the Greenbone Enterprise Support, the Greenbone Enterprise Feed and updates

Specifications

Dimensions (including rack mounts)

- 480 mm x 300 mm x 44 mm

Certification

- CE
- FCC Class A

Environment

- Betriebstemperatur:
0 °C to 45 °C (32 °F to 113 °F)
- Storage temperature:
- 20 °C to 80 °C (- 4 °F to 176 °F)
- Humidity: 10 % – 90 %
(non-condensing)

Connectivity

- 8 ports GbE Base-TX (copper)
- 2 ports 10 GbE SFP+
- 1 port serial console RS-232

Construction

- 1U rack mount chassis, heavy-duty steel
- 16x2 character LCD

Greenbone Enterprise 400

Data Sheet



Greenbone

Scan Capacity

- Up to 300 IP addresses in 24 h
- Control of up to 2 sensors
- OpenVAS scanner for vulnerability tests and compliance audits
- CVE scanner for prognosis scans

Supported Standards

- Network integration: SSH, SMTP (e-mail), SNMP, SysLog, LDAP, RADIUS, NTP, DHCP, IPv4/IPv6
- Vulnerability classification: CVE and CPE
- Severity classification via CVSS
- Network scans: WMI, LDAP, RADIUS, HTTP, SMB, SSH, TCP, UDP, etc.
- Compliance policies: CIS Benchmarks, IT-Grundschutz, BSI TR-03116 etc.

Graphical Web Interface

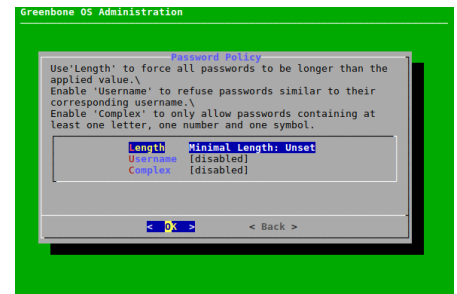
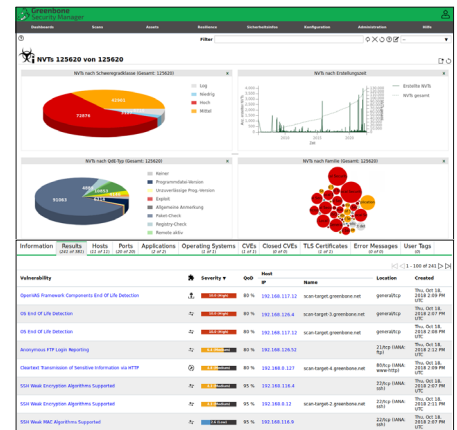
- Managing and starting scan tasks
- Report with filtering, sorting, notes, and risk scoring
- Automated scans through schedules
- Alerts, including on scan completion
- Multi-user support
- Clustering and distributed scanning via master-sensor mode
- Reports as PDF, HTML, text and XML
- Appliance performance overview

Integration/API

- Greenbone Management Protocol (GMP), encrypted
- All user actions of the web interface available via API
- Easy integration with other applications using the API
- Simple automation via command line tools (CLI)

Operating System Features

- Network integration and configuration
- Airgap function
- Backup, restore, factory reset, upgrade



Greenbone AG
Neumarkt 12
49074 Osnabrück
Germany

Tel.: +49-541-760278-0
E-Mail: sales@greenbone.net
www.greenbone.net